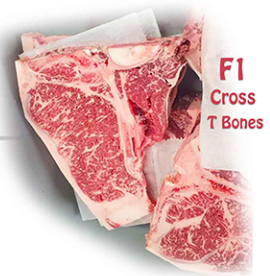




Bar V 618D ET
"Vince"
Reg # FB 24437

Flying A Wagyu



Dean & Donna Ackerman
(970) 539-0641 ~ Also on FB



AMERICAN WAGYU ASSOCIATION

Name: BAR V 618D ET

Birthdate: 03/11/2016
Tattoo/Brand: 618D
Coat Color: Black
DNA#: 7892478
Breeder: MUDDY FLATS CATTLE CO., AUGUSTA, WI, 475
Owner: DEAN AND/OR DONNA ACKERMAN, LA SALLE, CO, 3086
Date of Ownership: 06/01/2019

Sex: Male
Location: LE
Horn: Horned

Reg#: FB24437
Category: Black Wagyu
Grade: Fullblood
Breed Comp %: 100.00
Herd Classification: Standard

Genetic Status: B3F, CHSF, CL16F, F11F, F13F

Animal	Reg#	Category	Breed Comp %	Coat Color	Genetic Status
WORLD K'S MICHIFUKU	FB1615	Black	100	Black	B3F, CHSF, CL16F, F11F, F13F
WORLD K'S SANJIROU	FB2501	Black	100	Black	B3F, CHSF, CL16F, F11F, F13F
WORLD K'S SUZUTANI	FB1617	Black	100	Black	B3F, CHSF, CL16F, F11F, F13F
MICHİYOSHI	FB9420	Black	100	Black	B3F, CHSF, CL16F, F11F, F13F
JVP FUKUTSURU-068	FB2101	Black	100	Black	B3F, CHSF, CL16F, F11C, F13F
CHR MS FUKUTSURU 107L	FB5861	Black	100	Black	B3F, CHSF, CL16F, F11F
CHR MS TAKAZAKURA 044J	FB4835	Black	100	Black	B3F, CHSF, CL16F, F11F, F13F
ITOHİKARI	FB573	Black	100	Black	B3F, CHSF, CL16F, F11F, F13F
MITSUHIKOKURA 149	FB3683	Black	100	Black	B3F, CHSF, CL16F, F11F, F13F
HIKOKURA 3/9	FB572	Black	100	Black	B3F, CHSF, CL16F, F11F, F13F
MFC MS MITSUHIKOKURA 2-4	FB13938	Black	100	Black	B3F, CHSF, CL16F, F11F, F13F
JVP KIKUYASU-400	FB2100	Black	100	Black	B3F, CHSF, CL16F, F11F, F13F
MFC MS KIKUYASU 9-20	FB10637	Black	100	Black	B3F, CHSF, CL16F, F11F
MJB MS KITAGUNI 06K	FB5139	Black	100	Black	B3F, CHSF, CL16F, F11F

Great grand sire :**World K's MICHIFUKU, (FB 1615)**(foundation bull) known by many as the greatest carcass bull to ever leave Japan. Dec '22 top 1 % in MF (marble fineness) top 1 % EMA (rib eye size)

Great grand dam: **World K's Suzutani (FB1617)** first of three sisters exported from Japan, well known for being one of top producing cows. In the breed plan she is in the top 1 % EMA & retail beef yield RBY.

Grand sire: **WORLD K SANJIROU (FB2501)** is a trait leader for EMA, rib eye size, EBVs, breed plan and RBY, retail beef yields. Is a trait leader for EMA EBV (+10.7)& Retail Beef Yield EBV (2.6)

Sire: **Michiyoshi (FB9420)**, known as a marbling champion, in an AWA bull trial...100% of his offspring graded PRIME, with 92 % grading HIGH PRIME ! There is reference to a \$ 100,000 price tag in 2010.